

## Kit Lists

### After School Club Kit List

- A change of clothes, you might get dirty
- Change of Shoes as the site can get muddy and we don't want it inside
- Warm clothes for outside during the cold weather
- Towel and change of underwear (for water activities)
- Any medication you might need



### Day Scheme Kit List

- Activity Clothes
- Trainers (not open toe or sandals)
- Swimwear for wet activities (including footwear)
- Long sleeves and trousers are required for some activities
- Packed lunch and drinks  
**(we recommend that all packed lunches are brought to the centre in a cool bag/box in order to keep food at a suitable temperature)**
- Any medication
- Complete change of clothes
- Change of footwear
- Water proofs
- Towel and wash kit
- Plastic bag for wet clothes
- Sun cream (sunny weather) / hat, scarf and gloves for cold weather
- Money for vending machine

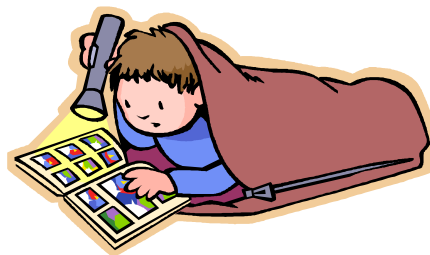


### Personal Property

All of your personal belongings are your responsibility at all times; LOPC takes no responsibility for any loss or damage. Unfortunately we cannot provide locker space for bags or jackets. Pegs are provided. There is also a valuables box which is located in the office, however please try to avoid bringing them. Spending money may be left in a named envelope in the office.

## Residential Kit List

- A complete change of clothes for each day including underwear, socks, t-shirts, tops and bottoms. These should preferably be tracksuit or lightweight clothes.
- Footwear suitable for outdoor wear e.g. trainers, walking boots
- Clean footwear for indoor activities.
- Toiletries– shampoo, soap, toothpaste, toothbrush, comb / brush etc!
- Medication (ensure you inform us of any medical conditions)
- Suntan lotion (in the summer)
- 2 towels
- A warm coat
- A woolly hat and a baseball cap
- Gloves and a scarf in cold weather
- A sleeping bag
- A pillow
- A sleeping mat if you have one
- Pyjamas
- A torch (with batteries)
- Plate, bowl, knife, fork, spoon and cup



## Lost Property

LOPC puts all lost property into a box located under the A Frame stairs. It is held there for one week only due to restricted space available. Any unclaimed lost property is then sent to Environ for recycling. LOPC stores lost property for one month

## Do Not Bring

Mobile phones, MP3 Players, personal stereos, electronic games, jewellery, expensive or non water-resistant wrist watches.